

2020

# IMPACT REPORT



Responsible  
Sourcing  
Policy





# CONTENTS

OVERVIEW OF ENVIVA'S RESPONSIBLE SOURCING POLICY ..... 2

LETTER FROM OUR CHIEF SUSTAINABILITY OFFICER ..... 3

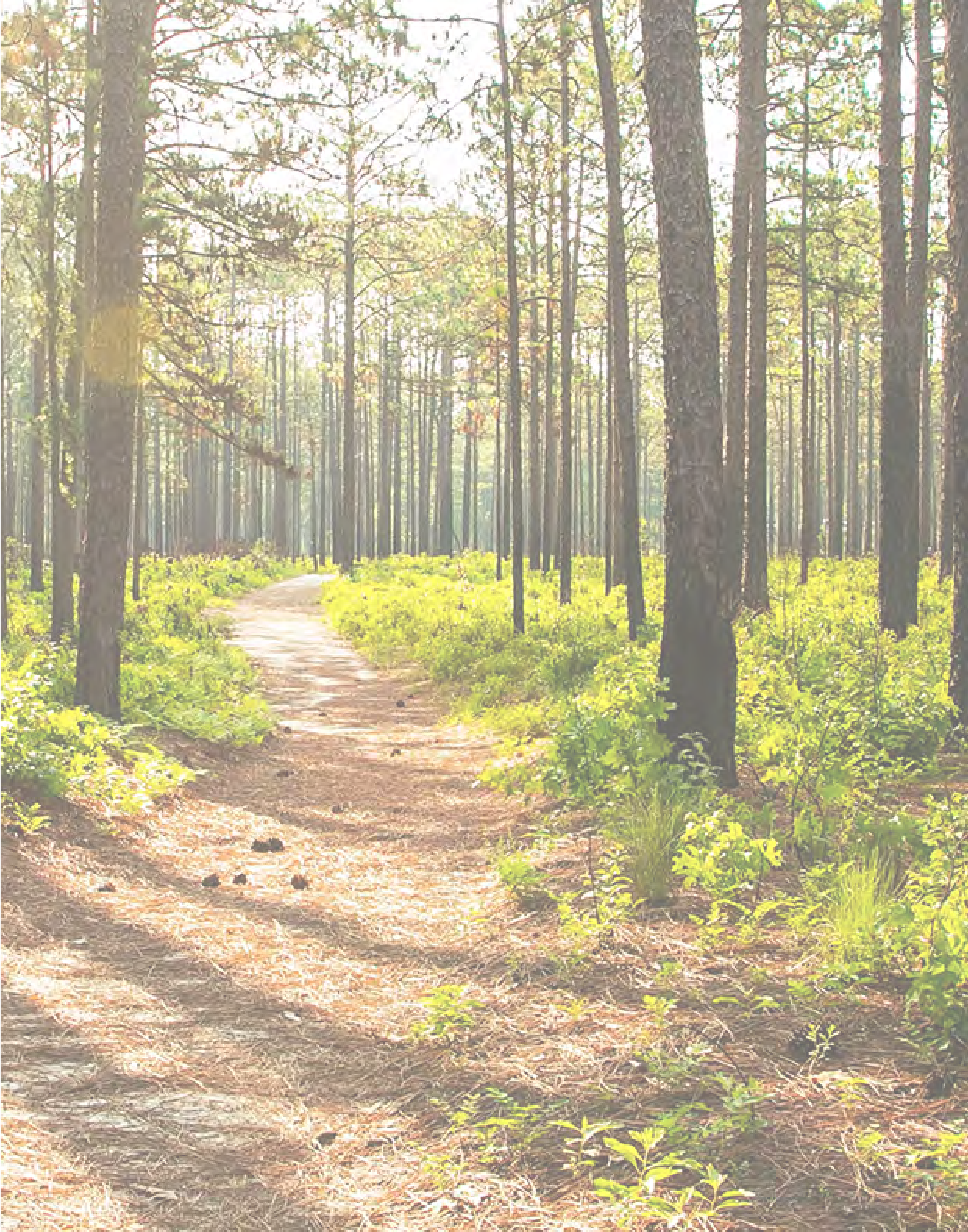
2020 IMPLEMENTATION PLANS ..... 4

• SUSTAINABLE FORESTRY STANDARDS.....5

• VERIFICATION AND TRANSPARENCY ..... 15

• PLEDGES IN CONSERVATION LEADERSHIP ..... 21

ENVIVA’S RESPONSIBLE SOURCING POLICY ..... 35



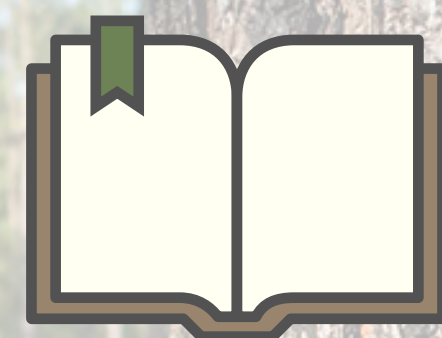




# OVERVIEW OF ENVIVA'S RESPONSIBLE SOURCING POLICY

## INTRODUCTION

Our Responsible Sourcing Policy (RSP) is Enviva's guidepost, which provides strict sourcing guidelines that hold us to the highest standards of sustainability, integrity, forest stewardship, and continuous improvement. In late 2018, we revised our RSP in conjunction with independent organizations, including nongovernmental organizations, state wildlife agencies, foresters, and other stakeholders. Ongoing collaboration with these organizations has resulted in tangible goals for which we have made specific implementation plans.



**LEGALITY**



**VERIFICATION**



**RESPECT FOR  
HUMAN RIGHTS**



**TRACEABILITY, TRANSPARENCY,  
AND REPORTING**



**SUSTAINABLE FORESTRY  
STANDARDS**



**PLEDGES IN  
CONSERVATION LEADERSHIP**



# LETTER FROM OUR CHIEF SUSTAINABILITY OFFICER



Dear friends and colleagues,

At this time one year ago, we were deeply engaged in planning for what we thought would be a normal, busy year. We were considering how we would allocate our time and resources for the year to come, with no idea that the world would look very different in just a matter of weeks.

What a difference a year makes.

Since the COVID-19 pandemic took hold in early 2020, we worked effectively to deliver on our goals in spite of the uncertainty we faced. And because we made good progress and found new ways to work and collaborate with partners despite the pandemic, I am especially proud to share our 2020 Impact Report.

This end-of-year Report is the last step in our annual Responsible Sourcing Policy (RSP) reporting cadence: we report on our Implementation Plans at the start of the year and then provide a mid-year progress report. Our final RSP Impact Report closes out the yearly cycle, in which we describe in more detail the progress we made over the course of the year toward the goals laid out in each one of our Implementation Plans.

Highlights of our 2020 accomplishments include publishing our first [Corporate Sustainability Report](#), featuring a GHG Inventory, Materiality Assessment, and a discussion of our sustainability journey. We also created and reported a SASB Index, to our knowledge a first in the industry, by drawing material variables from the Biofuels, Pulp & Paper, Forest Management, and Industrials categories. In addition, we made good progress on our five-year [partnership with The Longleaf Alliance](#) to restore longleaf forest systems, we rolled out our plan for [partnership with Finite Carbon](#) on creating high-quality, credible forest offsets in our supply regions, and we [partnered with GoChain](#) to conduct a pilot program designed to enhance the traceability of our pellets using blockchain technology.

We also laid the groundwork for the key initiatives that we'll fully implement in 2021. For example, we prepared the technical approach and training to support our expanded high conservation value (HCV) process; we scoped our new system for enhanced due diligence around third-party pellet purchases; and we prepared for an internal audit to our new Track & Trace® Standard.

There's much more in the Report, so I invite you to read on.

We're looking forward to a brighter year ahead, with courage and enthusiasm, as we prepare our plans for 2021.

Yours in Forest Stewardship,

**Jennifer Jenkins, PhD**

Vice President and Chief Sustainability Officer



# 2020 IMPLEMENTATION PLANS



**SUSTAINABLE  
FORESTRY STANDARDS**



**VERIFICATION &  
TRANSPARENCY**



**PLEDGES IN  
CONSERVATION LEADERSHIP**



# SUSTAINABLE FORESTRY STANDARDS

In the Sustainable Forestry Standards section of our policy we describe our commitments to ensure that we make an affirmative decision to purchase wood from a given harvest only when that harvest has a positive impact on the forest landscape from which we source. Following are the policy provisions and related plans that we focused on in 2020.

## POLICY PROVISION AND PLAN

### The forests we source from will regenerate and not be converted to non-forest uses

- Enhance satellite and field-based methodology for forest regeneration monitoring and analyze data for tracts harvested in 2017
- Investigate and understand underlying reasons for post-harvest land management decisions on a tract-by-tract basis
- Work with suppliers of secondary material to extend our land-use change policy upstream into our supply chain

### Water quality protected

- Attain 100% adherence to Best Management Practices (BMPs)
- With partners, hold at least one supplier training workshop in each of our regions to improve specific BMPs

### HCVs maintained

- Pilot our longleaf high conservation value (HCV) program at Cottondale and then fully implement
- Obtain 'element occurrence' biodiversity mapping from NatureServe and assess potential HCV expansions
- Test potential expanded HCV delineation
- Refine new HCV procedures and prepare for full implementation

Progress Tracker



Not Achieved



In Progress



Complete



**POLICY PROVISION:** The forests we source from will regenerate and not be converted to non-forest uses

**PLAN:**  
Enhance satellite and field-based methodology for forest regeneration monitoring and analyze data for tracts harvested in 2017.



Not Achieved



In Progress



Complete

**ACTION:**  
We successfully implemented our new monitoring methodology, using publicly available satellite imagery and field verification when necessary, to analyze forest regeneration at all tracts from which we sourced in 2017.



**IMPACT:**  
To ensure that the forests from which we source are regenerating, we monitor the tracts several years post-harvest. We use remote sensing to accomplish this, which allows us to scale our monitoring and confirm that we are achieving our policy goals. We also conduct field visits for a sample of tracts to ground-truth our remotely sensed information.



**POLICY PROVISION:** The forests we source from will regenerate and not be converted to non-forest uses

**PLAN:**

Investigate and understand underlying reasons for post-harvest land management decisions on a tract-by-tract basis.



Not Achieved



In Progress



Complete

**ACTION:**

To better understand regional drivers of post-harvest management decisions, we engaged with landowners to identify what influences their decision-making.



**IMPACT:**

We learned from this engagement that conversion *from* forest to non-forest land use occurs very rarely in our regions and conversion of land *to* forest use occurs at least as often. However, when the land has been converted from forest to non-forest use, it is typically for agriculture, residential development, or especially in the case of North Carolina, with strong state incentives for solar development, a solar project. In some cases, conversions can also be associated with land ownership transfer. Thanks to landowner feedback, we are working to mitigate the risk of sourcing from tracts that might later experience such conversion.



**POLICY PROVISION:** The forests we source from will regenerate and not be converted to non-forest uses

**PLAN:**

Work with suppliers of secondary material to extend our land-use change policy upstream into our supply chain.



Not Achieved



In Progress



Complete

**ACTION:**

We enhanced our Master Wood Purchase Agreement (MWPA) to include a provision for primary feedstock suppliers which details Track & Trace® (T&T®) requirements, clearer requirements for Chain of Custody and Controlled Wood compliance through the Forest Stewardship Council (FSC) and the Programme for the Endorsement of Forest Certification (PEFC), as well as clarification on the land use change and arboriculture feedstock requirements for both primary and secondary feedstock suppliers. We are working closely with all of our suppliers to ensure that they understand and support our requirements, and expect to complete this process for all of our mills and suppliers by Q3 2021.

**IMPACT:**

We created appropriate feedstock control systems for our primary and secondary feedstock suppliers to ensure compliance with our Responsible Sourcing Policy and certification requirements.





**POLICY PROVISION:** Water quality protected

**PLAN:**  
Attain 100% adherence to Best Management Practices (BMPs).

 Not Achieved

 In Progress

 Complete

**ACTION:**  
We completed a total of 407 inspections across our sourcing regions, representing a 72% year-over-year increase: 336/336 assigned BMP inspections for T&T, plus 71 additional inspections. This resulted in 13.9% of our tracts being inspected, a 2.7% increase from 2019.

**IMPACT:**  
Enviva foresters completed 100% of their assigned inspections. Maintaining close contact with suppliers and having regular dialogue about forestry BMPs is critical for their proper implementation in each of our regions. A BMP score of "1" indicates proper implementation, less than 1 is exceptional, and greater than 1 indicates room for improvement. The cumulative average of our BMP inspections was exactly 1.00, an improvement of 0.03 from 2019.



We're especially proud of our team for enduring through the challenges posed by COVID-19, not only accomplishing this goal safely and creatively, but going above and beyond, surpassing expectations.



**POLICY PROVISION:** Water quality protected

**PLAN:**

With partners, hold at least one supplier training workshop in each of our regions to improve specific BMPs.



Not Achieved



In Progress



Complete

**ACTION:**

Unfortunately, COVID-19 precluded most in person workshops, but we were able to support virtual BMP trainings in Alabama and Georgia. In 2020, we also supported the Sustainable Harvesting And Resource Professional (SHARP) Logger Program, which was organized by Virginia Polytechnic Institute & State University. SHARP is a sustainable forestry training program offered to loggers, foresters, and others throughout the state of Virginia.



**IMPACT:**

Our BMP trainings, which are designed for foresters and/or loggers, improve the implementation of forest management and logging practices that protect water quality, such as proper stream crossings.



**POLICY PROVISION:** HCVs maintained

**PLAN:**

Pilot our longleaf high conservation value (HCV) program at Cottondale and then fully implement.



Not Achieved



In Progress



Complete

**ACTION:**

Our Cottondale sustainability and procurement foresters partnered with The Longleaf Alliance in Florida and piloted new procedures to identify longleaf-dominant or codominant stands with GIS mapping. We also piloted the use of a rapid assessment application for mobile phones, to evaluate forest conditions before and after restoration-oriented biomass harvesting.

**IMPACT:**

Our new longleaf HCV procedures provide verification that all of Enviva's sourcing in mapped, longleaf-dominant or co-dominant stands will maintain or improve them, according to America's Longleaf Restoration Initiative's longleaf condition classes, which indicate forest health.





# POLICY PROVISION: HCVs maintained

## PLAN:

Obtain ‘element occurrence’ biodiversity mapping from NatureServe and assess potential HCV expansions.



Not Achieved



In Progress



Complete

## ACTION:

We applied the HCV Resource Network approach to guide our expanded HCV process. The HCV Resource Network strives to protect HCVs in areas where the expansion of forestry and agriculture may put important forests, biodiversity, and local communities at risk and – to our knowledge – this is the first time the approach has been applied by a forest products company to guide sourcing activities in the U.S. Southeast. We used the ‘element occurrence’ data that we obtained from NatureServe, in order to meet the main biodiversity data requirements for the HCV Resource Network approach, and we assessed the applicability of this data for protecting imperiled species and communities. NatureServe is a non-profit conservation organization that provides wildlife conservation related data.

## IMPACT:

Using the GIS-based approach, our wood procurement foresters will be able to assess, in real-time, the presence or absence of imperiled species on prospective tracts. This will enable us to help conserve imperiled species in our sourcing regions.





**POLICY PROVISION:** HCVs maintained

**PLAN:**

Test potential expanded HCV delineation.



Not Achieved



In Progress



Complete

**ACTION:**

We used GIS technology to overlay our expanded HCV definitions with our historical sourcing to validate the commercial feasibility and ecological desirability of our proposed approach per the HCV Resource Network approach.

**IMPACT:**

Working with our wood procurement foresters, we found that the expanded HCV definitions were both ecologically protective and commercially viable. This pilot test gave us confidence that our HCV procedures will be effective in alerting us to the presence of mapped imperiled species and ecological communities when it is rolled out in 2021.

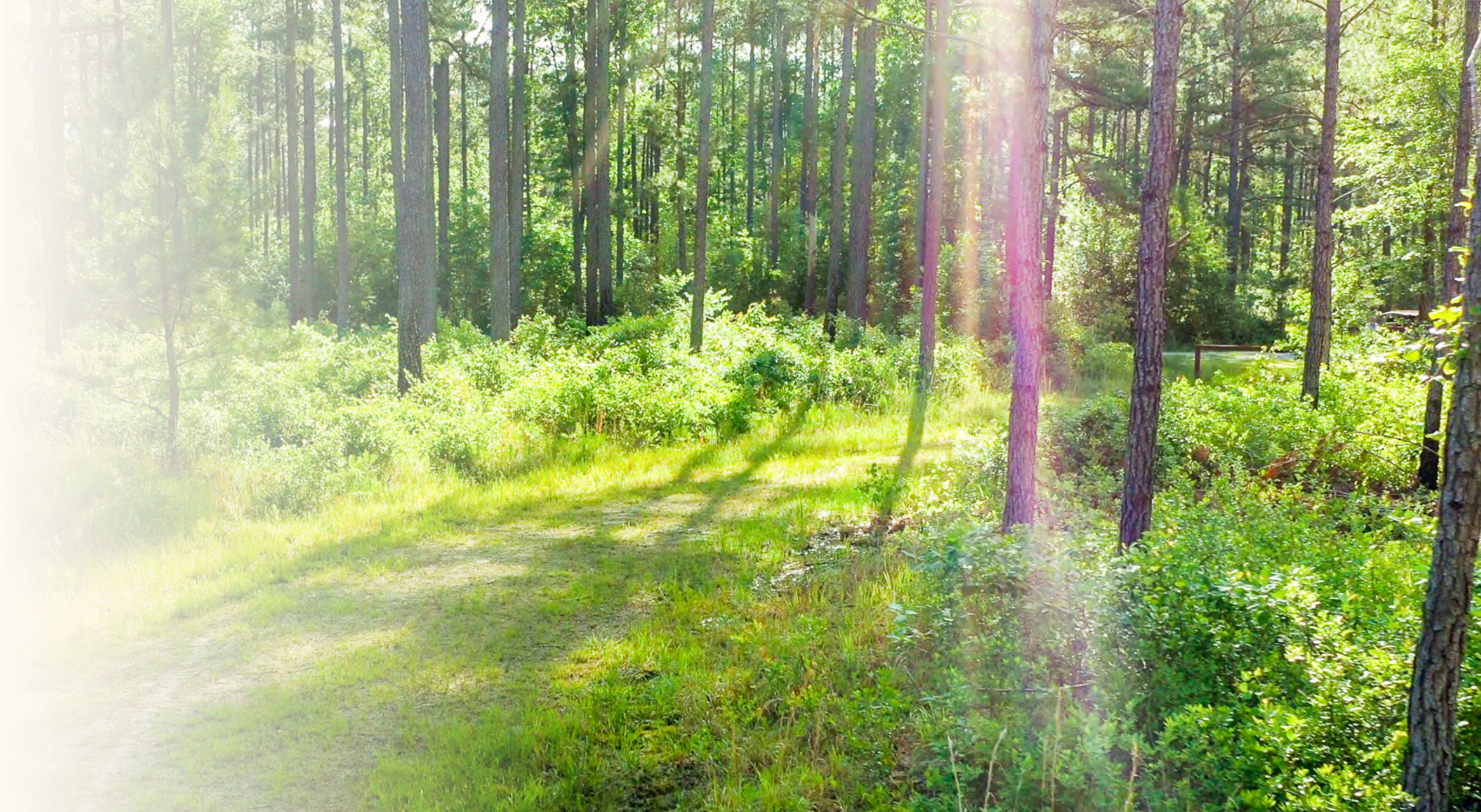




**POLICY PROVISION:** HCVs maintained

**PLAN:**

Refine new HCV procedures and prepare for full implementation.



Not Achieved



In Progress



Complete

**ACTION:**

Using the data we obtained from NatureServe, we created a set of formal procedures for our wood procurement team to follow as they conduct tract-by-tract diligence for wood purchase decisions. Based on the new datasets and procedures, we prepared a series of training materials that describe the steps to be followed in the expanded HCV process. We reviewed, refined, and tested them and will use these materials to roll out our expanded HCV program in early 2021.

**IMPACT:**

Our foresters will be able to use these new expanded HCV procedures to identify and protect more forest stands that provide critical habitat to species and ecological communities that are imperiled at the state or global level. This will ensure that we do not source from stands with imperiled species or ecological communities, unless there are well-accepted management practices that will actually improve habitat conditions.



# VERIFICATION AND TRANSPARENCY

Our Responsible Sourcing Policy details the ways in which we seek to enhance the transparency of our operations and the verification of our information through technological solutions and third-party sustainability certification systems. Following are the policy provisions and related plans that we focused on in 2020.

## POLICY PROVISION AND PLAN

### Verification

- Complete internal audit in order to be fully prepared to conduct first external audit to our new Track & Trace® (T&T®) Standard
- Add 30,000 acres to our American Tree Farm System (ATFS) and/or Forest Stewardship Council (FSC) group certifications
- Work with stakeholders to understand timber product definitions and the dynamics of regional markets for timber and wood fiber to continue to demonstrate that the low-value feedstocks we use occur in symbiosis with the forest products that create long term carbon storage

### Transparency

- Publish first Corporate Sustainability Report by the end of the year
- Scope formal system for reporting compliance of volumes purchased from third-party suppliers with our Responsible Sourcing Policy (RSP), for full implementation in 2021

Progress Tracker



Not Achieved



In Progress



Complete



**POLICY PROVISION:** Verification

**PLAN:**

Complete internal audit in order to be fully prepared to conduct first external audit to our new Track & Trace® (T&T®) Standard.



Not Achieved



In Progress



Complete

**ACTION:**

We strengthened our T&T program by refining our procedural documents and developing both internal and external training programs. We trained associates as internal auditors and completed our first internal audit to our new T&T Standard in November 2020.



**IMPACT:**

Our standardized internal and external training programs ensure that we are communicating our program requirements consistently to all stakeholders. The internal audit results will guide our efforts as we further prepare the program for an official third-party audit to the Standard.



**POLICY PROVISION:** Verification

**PLAN:**

Add 30,000 acres to our American Tree Farm System (ATFS) and/or Forest Stewardship Council (FSC) group certifications.



Not Achieved



In Progress



Complete

**ACTION:**

We certified a total of 41,123 acres into our own ATFS and FSC group schemes. We also added 8,311 acres to the Tree Farm programs in the states where we operate and supported the re-inspection of 978 acres within the state Tree Farm system.



**IMPACT:**

We provide landowners with access to third-party forest management certification via our Independently Managed Groups (IMG). We are pleased to be able to provide both ATFS and FSC certification to interested landowners in our supply regions.



# POLICY PROVISION: Verification

## PLAN:

Work with stakeholders to understand timber product definitions and the dynamics of regional markets for timber and wood fiber to continue to demonstrate that the low-value feedstocks we use occur in symbiosis with the forest products that create long term carbon storage.



Not Achieved



In Progress



Complete

## ACTION:

We worked with our auditors at SCS Global to incorporate verification of the quality of our roundwood feedstocks and comparison to sawtimber specifications into our 2020 Sustainable Biomass Program audit reports.



## IMPACT:

We received third-party validation from our auditor that our feedstocks are indeed the lowest-value material produced at harvest. Based on this third-party verified information, we can provide our customers and regulators with certainty that we are doing what we say we do, which is to use material that is a by-product of a traditional timber harvest.



**POLICY PROVISION:** Transparency

**PLAN:**

Publish first Corporate Sustainability Report by the end of the year.



Not Achieved



In Progress



Complete

**ACTION:**

We released our first Corporate Sustainability Report focusing on the three key topics that have defined Enviva’s mission since our founding in 2004: People, Forests, and Climate Change.

**IMPACT:**

The Report highlights Enviva's sustainability journey, describing our work to improve forest health at multiple scales in the U.S. South, to address climate change worldwide by displacing fossil fuels, and to drive positive, economic change in the communities where we operate.



DISPLACE COAL  
GROW MORE TREES  
**FIGHT CLIMATE CHANGE**



Sustainability Report 2020



**POLICY PROVISION:** Transparency

**PLAN:**

Scope formal system for reporting compliance of volumes purchased from third-party suppliers with our Responsible Sourcing Policy (RSP), for full implementation in 2021.



Not Achieved



In Progress



Complete

**ACTION:**

We completed the design and implementation plan for a supplier engagement process that will assess and track compliance of third-party pellet suppliers against our RSP.



**IMPACT:**

Due diligence on third-party suppliers from whom we purchase pellets is an integral part of our RSP. We only purchase from third-party pellet producers when we can be certain that those producers will engage with us, committing to work toward being able to reach our RSP standards. We will gather additional data through this formal supplier engagement process to report on our supply chain and identify areas where we can support third-party suppliers to improve their own responsible sourcing practices.



# PLEDGES IN CONSERVATION LEADERSHIP

We pledge to go beyond our tract-level sustainability standards in order to progress toward our vision of sourcing wood in ways that promote the sustainability of forest ecosystems at the landscape level. Because the regional forest products industry is an integrated system, in which different grades of wood are created from each harvest and delivered to various local markets, this requires collaborative work with a variety of other stakeholders.

## POLICY PROVISION AND PLAN

### Help keep the amount of forestland stable or increasing at regional scales

- Support full funding of the Land and Water Conservation Fund (LWCF) by working closely with elected officials and other consortia such as the Forest Climate Working Group
- Create support for the value of active forest management in the U.S. Southeast by assisting the Keeping Forests collaboration with outreach on the conservation benefits of working forests

### Conserve wetland forest ecosystems, peatland forests, and high-carbon tropical forests

- Help conserve 3,500 acres of bottomland hardwood (BLHW) forests through the Enviva Forest Conservation Fund (EFCF) and stay on track to meet our 10-year goal of helping to conserve 35,000 acres of BLHW
- Work with partners to provide landowners with access to carbon payments for delayed harvest in BLHW forests

Progress Tracker



Not Achieved



In Progress



Complete



**POLICY PROVISION:** Help keep the amount of forestland stable or increasing at regional scales

**PLAN:**

Support full funding of the Land and Water Conservation Fund (LWCF) by working closely with elected officials and other consortia such as the Forest Climate Working Group.



Not Achieved



In Progress



Complete

**ACTION:**

We supported full funding of the LWCF, which was accomplished with the passage and signing of the Great America Outdoors Act in August.

**IMPACT:**

The LWCF is regarded as the single most important conservation funding program in the country, funding — among other things — the conservation of working forestland.





**POLICY PROVISION:** Help keep the amount of forestland stable or increasing at regional scales

**PLAN:**

Create support for the value of active forest management in the U.S. Southeast by assisting the Keeping Forests collaboration with outreach on the conservation benefits of working forests.



Not Achieved



In Progress



Complete

**ACTION:**

We assisted the Keeping Forests collaboration by strategizing on stakeholder outreach and helping to develop effective messaging about the conservation value of working forests. Keeping Forests is a diverse coalition of forest advocates, conservation experts, business leaders and everyday people working in defense of the southern U.S. forests.



**IMPACT:**

Keeping Forests identified three pivotal strategies to accomplish its goal of maintaining working forestland in the U.S. Southeast. We assisted by generating additional external support, recruiting conservation leaders and land grant universities that could be trusted messengers to convey the conservation importance of working forestland.



**POLICY PROVISION:** Conserve wetland forest ecosystems, peatland forests, and high-carbon tropical forests

**PLAN:**

Help conserve 3,500 acres of bottomland hardwood (BLHW) forests through the Enviva Forest Conservation Fund (EFCF) and stay on track to meet our 10-year goal of helping to conserve 35,000 acres of BLHW.



Not Achieved



In Progress



Complete

**ACTION:**

We helped to conserve 2,736 acres via the EFCF, falling short of our goal to help conserve at least 3,500 acres, because some of our grant recipients decided not to follow through with their projects at this time. This was most often due to financial pressures caused by the COVID-19 pandemic.

**IMPACT:**

After five years of funding, the Fund has helped to conserve 17,506 acres of BLHW forests and is on track to accomplish its 10-year goal of conserving 35,000 acres of BLHWs.





**POLICY PROVISION:** Conserve wetland forest ecosystems, peatland forests, and high-carbon tropical forests

**PLAN:**

Work with partners to provide landowners with access to carbon payments for delayed harvest in BLHW forests.



Not Achieved



In Progress



Complete

**ACTION:**

We partnered with Finite Carbon on its CORE program, an online platform that gives small forest landowners across the U.S. Southeast access to new income from carbon offsets through forest stewardship and extended rotations of mature BLHW forests.

**IMPACT:**

Our partnership with Finite Carbon will allow us to introduce landowners of sensitive bottomland forests in our network to an easily accessible tool that will enable them to enhance carbon storage on their land. This will significantly increase the availability of carbon income to small landowners in the region, and as part of implementing our new expanded HCV procedures, will provide us with an important new conservation option for landowners.





# PLEDGES IN CONSERVATION LEADERSHIP

We pledge to go beyond our tract-level sustainability standards in order to progress toward our vision of sourcing wood in ways that promote the sustainability of forest ecosystems at the landscape level. Because the regional forest products industry is an integrated system, in which different grades of wood are created from each harvest and delivered to various local markets, this requires collaborative work with a variety of other stakeholders.

## POLICY PROVISION AND PLAN

### Address the conversion of high-quality habitat for at-risk species

- Continue academic work to understand regional drivers of forest type conversion
- Use data to identify forest types at risk of conversion in our supply areas
- Work with partners to develop alternative management strategies to decrease the likelihood of high-quality habitat conversion, for implementation in 2021

### Restore critical, threatened, or declining forest types

- Establish partnership with The Longleaf Alliance
- Release our longleaf high conservation value (HCV) program and five-year restoration plan
- Certify 2,500 acres of longleaf pine
- Get 5,000 acres on track for restoration sourcing
- Help plant 135,000 longleaf seedlings on public and private land
- Install/repair 150+ red-cockaded woodpecker nesting boxes to support longleaf habitat for at-risk species

Progress Tracker



Not Achieved



In Progress



Complete



**POLICY PROVISION:** Address the conversion of high-quality habitat for at-risk species

**PLANS:**

- A) Continue academic work to understand regional drivers of forest type conversion.
- B) Use data to identify forest types at risk of conversion in our supply areas.

 Not Achieved

 In Progress

 Complete

**ACTIONS:**

- A) North Carolina State University completed the study we commissioned to understand and analyze background trends in forest type conversion in the U.S. South. Forest type conversion in the region is especially important because the North American Coastal Plain in the U.S. Southeast is a biodiversity hotspot. It is important to maintain ample habitat for sensitive species in the region.
- B) We gathered data on what forest types have higher likelihoods of conversion to pine in our sourcing regions from North Carolina State University, National Council for Air and Stream Improvement (NCASI), and members of our regional conservation teams.



**IMPACT:**

Planted pine acreage makes up about 20% of the working forest landscape in the U.S. Southeast and has increased by about 1.6% over the last decade. The increase came from roughly equal amounts of upland hardwood, mixed pine-hardwood, and natural pine forests. Natural pine also increased by about 5.6%, with the largest increases coming from planted pine and mixed pine-hardwood forests. Regionwide, about 2.6% of forests were harvested every year over the past decade, and more than half of that harvest occurred in pine stands. Forest type conversion is equally as likely to convert hardwood forest to pine as it is to convert pine back to hardwoods. In other words, forest type conversion is equally likely in both directions: once an upland hardwood stand is harvested, the new forest is equally as likely to be a pine plantation, as a pine plantation is to be converted to an upland hardwood forest.



**POLICY PROVISION:** Address the conversion of high-quality habitat for at-risk species

**PLAN:**

Work with partners to develop alternative management strategies to decrease the likelihood of high-quality habitat conversion, for implementation in 2021.



Not Achieved



In Progress



Complete

**ACTION:**

We worked with our conservation team members as well as our wood procurement team to identify silvicultural management practices like shelterwood regeneration systems that might enable us to assist landowners to avoid conversion of high-quality upland hardwood habitats in the Piedmont region of northeast North Carolina and southeast Virginia.



The White Oak Initiative is a diverse group of universities, state and federal agencies, private landowners, conservation organizations, trade associations, and forest industries, committed to ensuring the long-term sustainability of white oak forests – and their economic, social and environmental benefits – for centuries.

**IMPACT:**

With inventive silviculture practices now identified, we are preparing a program that will enable us to help interested landowners implement appropriate management for upland hardwood stands, particularly white and other upland oaks, to protect upland hardwood forests that provide critical habitat value. Our pilot will help address the historic decline in upland hardwood stands across the U.S. Southeast as well as contribute to the regeneration of upland oak stands, which has been identified as an emerging concern by the White Oak Initiative. Our pilot will help us develop sourcing procedures to address the conversion of upland hardwood stands that provide critical habitat.



**POLICY PROVISION:** Restore critical, threatened, or declining forest types

**PLAN:**  
Establish partnership with The Longleaf Alliance.



Not Achieved



In Progress



Complete

**ACTION:**

We announced our partnership with The Longleaf Alliance in March and have been collaborating intensively throughout the year.



**IMPACT:**

The Longleaf Alliance is providing technical assistance, strategic guidance, and collaborative outreach to increase our restoration-oriented sourcing in longleaf forests. For example, The Longleaf Alliance assisted with: landowner webinars in Florida and Mississippi; the development of the mobile app for condition class assessment; and worked with us to provide partnerships and other outreach opportunities.



**POLICY PROVISION:** Restore critical, threatened, or declining forest types

**PLAN:**

Release our longleaf high conservation value (HCV) program and five-year restoration plan.



Not Achieved



In Progress



Complete

**ACTION:**

We released our longleaf HCV program and five-year restoration plan in March.



**IMPACT:**

In addition to the HCV procedures described above, our five-year longleaf restoration plan sets out strategies to increase our restoration-oriented biomass sourcing, including increasing our purchasing from restoration projects on public lands and conducting outreach to private landowners interested in establishing or improving longleaf. We will release our 2020 progress report as well as our 2021 longleaf restoration goals with The Longleaf Alliance in 2021.



**POLICY PROVISION:** Restore critical, threatened, or declining forest types

**PLAN:**  
Certify 2,500 acres of longleaf pine.



Not Achieved



In Progress



Complete

**ACTION:**

With help from our forestry consultant Milliken Forestry Company, we helped certify over 6,600 acres of longleaf forests in either Tree Farm or Forest Stewardship Council (FSC) systems.

**IMPACT:**

With interested landowners, we are working with Milliken to write management plans focused on longleaf ecosystem restoration, including the use of longleaf condition class metrics developed by America's Longleaf Restoration Initiative (ALRI). The tracts involved can then be certified to a forest management standard including Tree Farm or FSC.





**POLICY PROVISION:** Restore critical, threatened, or declining forest types

**PLAN:**  
Get 5,000 acres on track for restoration sourcing.



Not Achieved



In Progress



Complete

**ACTION:**

Enviva and Milliken helped to certify 6,000+ acres of longleaf forests that are now ready for restoration-oriented management and sourcing.



**IMPACT:**

We worked with landowners to develop restoration-oriented management plans which we then certified under the Tree Farm or FSC system. This is an important step in helping them to manage and restore their longleaf stands.



**POLICY PROVISION:** Restore critical, threatened, or declining forest types

**PLAN:**  
Help plant 135,000 longleaf seedlings on public and private land.



Not Achieved



In Progress



Complete

**ACTION:**  
We collaborated to plant 60,000 seedlings at the DeSoto National Forest in Mississippi in the 2020-2021 planting season. Near our plant in Cottondale, Florida, we helped to plant 39,000 seedlings on private lands and 99,000 seedlings at Torreya State Park in Florida. We exceeded this goal by nearly 50%, helping to plant a total of 198,000 longleaf seedlings.



**IMPACT:**  
The longleaf seedlings we plant will establish new longleaf forests, contributing toward ALRI’s 15-year goal of increasing the amount of longleaf forests from 3.4 million to 8 million acres.



**POLICY PROVISION:** Restore critical, threatened, or declining forest types

**PLAN:**

Install/repair 150+ red-cockaded woodpecker nesting boxes to support longleaf habitat for at-risk species.



Not Achieved



In Progress



Complete

**ACTION:**

As we stated in our Mid-Year Report, we partnered with The Longleaf Alliance and worked with its red-cockaded woodpecker cavity expert to install 56 new cavities, replace 54 cavities, and clean and repair 61 cavities on the DeSoto National Forest.

**IMPACT:**

Installing nesting cavities improves the red-cockaded woodpecker's reproductive success, which is making an important difference in the species' recovery.





# ENVIVA'S GLOBAL RESPONSIBLE SOURCING POLICY AND PLEDGES IN CONSERVATION LEADERSHIP

This policy will serve as the guiding principle for Enviva's global sourcing, applying to our purchasing of trees and other forms of wood from forests, residues from forest product facilities, and biomass produced by other companies. Enviva seeks to preserve soil and water quality; to protect rare, threatened, and endangered species, habitats, and ecosystems; to promote the continuous growth of diverse, natural forests; and to contribute toward building a forest products industry that thrives on good practices.

With this policy, we build on our previous standards of sustainable forestry to better conserve key ecological values. We also adopt into this policy our critical view of Enviva as a steward of diverse, thriving forested landscapes, and as a key player in collaborative efforts to address landscape-level conservation priorities at scale.

We will define and communicate our continuous improvement process through annual implementation plans, which will include measurable goals and timelines, as we work to more fully realize our ambitions. We will work deliberately over time to ensure that 100 percent of our sourcing meets our expectations.

Our policy and pledges reflect our core commitments to the highest standards of sustainability, stewardship, and integrity. For years to come, our policy and pledges will guide our work and be the measure of our progress.

## 1. Legality

Enviva's employees, suppliers, and subcontractors comply with all applicable federal, state, and local laws and regulations, including those pertaining to harvesting and exporting, environmental standards, and employment conditions. All Enviva contracts with suppliers require that wood is legally logged. At Enviva, we understand that legality is only a first step to ensure responsible harvesting; therefore, we have additional policy criteria that go above and beyond legal requirements.

## 2. Respect for Human Rights

Enviva has a strong commitment to ethical business practices and is committed to treating people with dignity, respect, and equal opportunity. We expect the same commitment from our suppliers. All suppliers are required to comply with our expectations regarding human rights and labor, health and safety, and business conduct and ethics. In keeping with our supply-chain sustainability certifications, Enviva holds our suppliers accountable to the International Labour Organization Declaration on Fundamental Principles and Rights at Work and the United Nations Declaration on the Rights of Indigenous Peoples. Enviva also respects the rights of Indigenous Peoples and communities to the ownership and control of their

titled or customary lands, including their right to give or withhold their free, prior and informed consent (FPIC) to proposed developments on their lands.

## 3. Sustainable Forestry Standards

The primary wood we purchase must be sourced from sustainably-managed forests and harvesting operations. Enviva will only source primary materials from a supplier when:

- a. The forest source will be replanted or regrown as forests and will not be converted to non-forest uses;
- b. Water quality in a harvest area is protected through adherence with forestry Best Management Practices (BMPs) [or equivalent practices outside the U.S.]; and
- c. High Conservation Values (HCVs) are not threatened by harvest activities.

We understand that not all suppliers of residues or third-party pellet manufacturers will be able to fully and immediately comply with all our Sustainable Forestry Standards. We will work with our residue and third-party pellet suppliers to set ambitious but realistic timelines for them to achieve compliance and support them as necessary and feasible to reach our standards.

[find the policy online](#)



#### 4. Verification

We will monitor suppliers' performance to ensure that we are making measurable, timely progress on implementing the policy criteria. Suppliers failing to meet our time-bound requirements will go through a review process and may be subject to non-renewal or termination of contracts. The policy criteria will increasingly be included in our supplier selection and evaluation process.

Independent forest product certification programs can provide a consistent and transparent framework for evaluating the sustainability of a company's operations, from forest to product. Enviva is chain-of-custody certified through several organizations, and we highly value sustainable forest management certification. We engage in ongoing landowner outreach and make direct investments to support landowners achieving sustainable forest management certification of their forestlands. We give preference in our procurement to wood from forests certified to be sustainably managed.

We recognize that other verification systems can provide important insight into our wood sources. We will continue to seek out innovative and credible methods of verifying that our supply base meets and exceeds our standards.

#### 5. Traceability, Transparency, and Reporting

We currently identify and publish the source of our primary wood supply through our [Track & Trace®](#) platform. We monitor and audit our primary purchases and supplier practices based on the data that we collect and publish, and we commit to report twice annually on the progress that we and our residue suppliers and third-party pellet producers have made against our Sustainable Forestry Standards, as well as the progress we've made on our annual implementation plans related to our Sustainable Forestry Standards and Pledges in Conservation Leadership.

We expect the percentage of our supply that fully meets our expectations to gradually increase year over year, with a goal of eventually achieving 100 percent.

#### 6. Pledges in Conservation Leadership

As a leader, we pledge to go beyond our tract-level sustainability standards and progress toward our vision of sourcing wood and biomass in ways that promote the sustainability of forest ecosystems at the landscape level. For us, sustainability at the landscape level means doing what we can to conserve species, forest communities, and ecological processes and

functions. Our pledge to lead on landscape-scale sustainability issues means that our responsibility doesn't end once we have purchased wood. We support ongoing sustainable forest management after harvest by helping family forest owners obtain management plans and sustainable forest management certification. In addition, when we buy a larger portion of the volume from a harvested tract, we will make extra efforts to ensure that we are supporting sustainability at the tract and landscape level.

We recognize we can't accomplish our landscape conservation goals alone, so we pledge to collaborate with stakeholders to help:

- Keep the amount of forestland stable or increasing at regional scales;
- Conserve wetland forest ecosystems, peatland forests, and high-carbon tropical forests;
- Address the conversion of forest types that provide high-quality habitat for at-risk species; and
- Restore critical, threatened, or declining forest types.



**We recognize that our wood purchasing impacts a wide range of sustainability indicators and even land use. Because we take the responsibilities of leadership seriously, we will innovate our own sourcing practices and collaborate with stakeholders as we work to implement our policy and continuously improve.**